

Julie Chang

12 Young Ave. | Pelham, NY 10803 | (914) 319-7393

Julie@JCAStrategicSolutions.com | www.linkedin.com/in/juliechang

Westchester Community College – Sustainability Presentation

WEDNESDAY, MARCH 26, 2025

11:30 am – 12:30 pm

Technology Building – Room #107

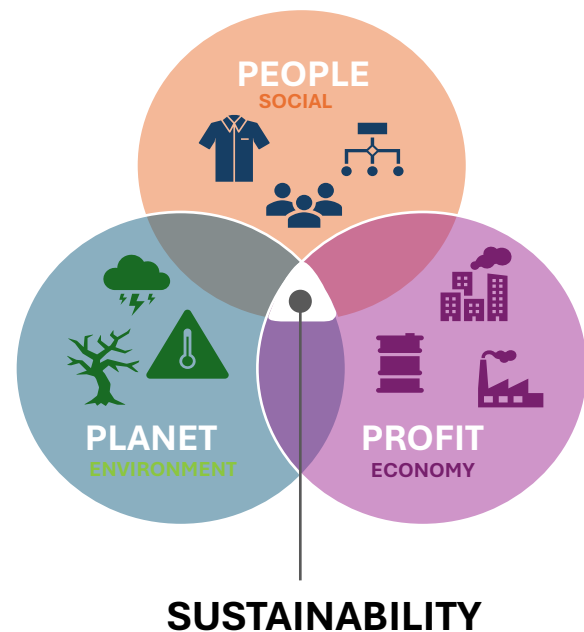
Come learn what the buzz word “Sustainability” is all about. It is here to stay and continues to drive jobs and opportunities.

Our focus on sustainability comes from balancing the needs of society, our environment, and the economy. It is at the heart of people, profit, and planet.

Sustainability is driving whole industries such as energy, agriculture and transportation and its influencing how companies operate and measure performance.

Companies big and small are directed by sustainability and the jobs continue to grow.

This presentation provides a review of sustainability and a sampling of jobs associated with it.



Biography

Julie Chang is an accomplished global business leader for complex and high-profile resilience, economic and environmental sustainability projects. She is recognized as an insightful systems-based thinker who leads cross-disciplinary technical teams to deliver smart growth strategies and projects that promote sustainable communities.

Her leadership and program delivery experience ranges from leading several divisions and a transformation initiative at Jacobs, a \$14B engineering and technical solutions firm committed to creating a more connected and sustainable world. She was also the General Manager of Sam Schwartz Consulting, a transportation planning and engineering firm in New York and was a Principal level Economist at the firm Ecology & Environment where she spearheaded their resilience and sustainability practice.

Ms. Chang is a lifelong resident of Westchester and has committed her career to the development of sustainable communities. She holds a M.B.A from MIT’s Sloan School of Business and a B.A. from Tufts University. She serves on the Board of Sustainable Westchester, the NY League of Conservation Voters.